

Cooper/Ports America, LLC



Houston City Docks
Your One-Stop
Wind Energy Logistics Solutions



The C/PA Advantage

- 100+ Acres of paved storage yards. Short and long-term storage available.
- Ability to handle complete wind units: tower sections, nacelles, and blades.
- Unit train capable (72 car trains – 89ft. Cars) – longer trains can be accommodated subject to approval
- Ability to store & load wind blades/towers up to 74 meters in length to rail
- Ability to store & load wind blades/towers up to 74 meters in length to truck
- Average unit train loading times 20 hours per train
- 11 Hours of operation per day



Example of Ship/Ship Side Wind Energy Solutions & Efficiencies

- Dedicated (order by name) and experienced workforce / supervision
- Direct discharge from vessel to road or rail transport if needed
- 18 berths available to work wind energy cargo which minimizes any congestion and vessel demurrage risks
- Single responsible party for both ship and terminal operations



PTRA and C/PA City Dock Partnership & Efficiencies

- Proximity to PTRA Yard (s)
- Serviced by Three Class 1 Railroads (UP-BN-KCS)
- 15 Miles of Track within C/PA's Controlled Area, including ship-side tracks at most berths
- Ability to load and stage 72 car unit trains (89 ft. cars) – see attached step plan



Other Benefits

- Multiple terminal entrances to accommodate any size truck / cargo
- Overnight and weekend truck access and parking areas
- Dedicated overwide gate with direct access to 610 Loop and I-10
- No-charge space for trucks awaiting permits, escorts, etc.
- Streamlined truck check-in / processing / loading

City Docks

9 Open and 9 Whse Berths and Associated Laydown Area
1m/SF of Warehouse
60+ Acres of Leased Yards (Marked in Red)





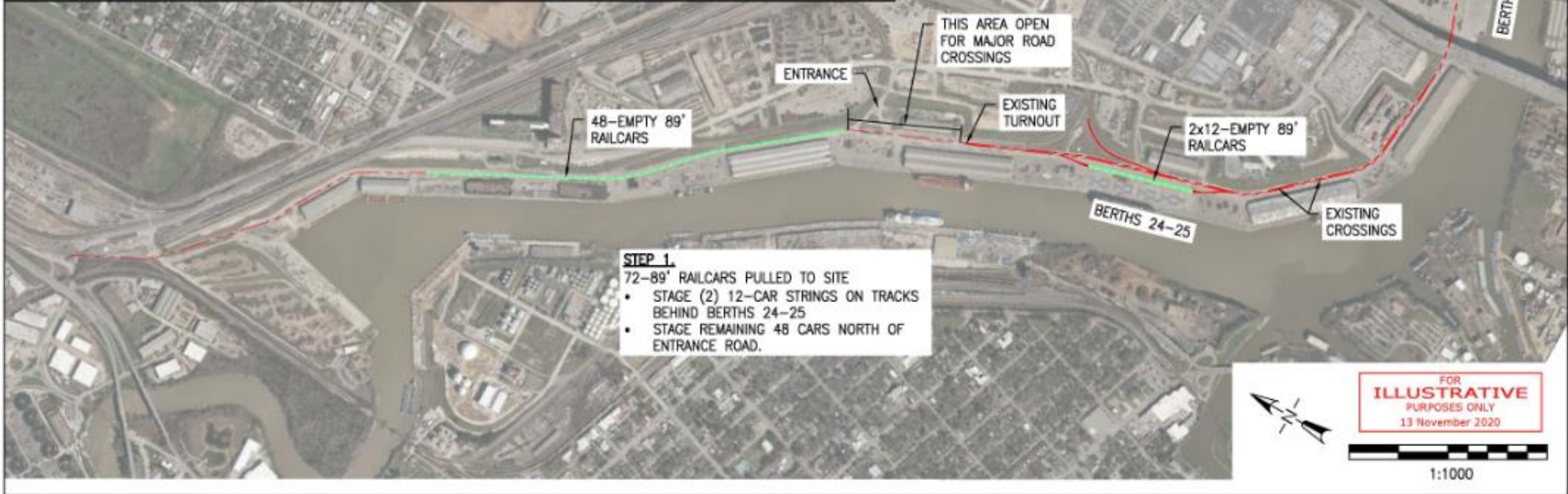
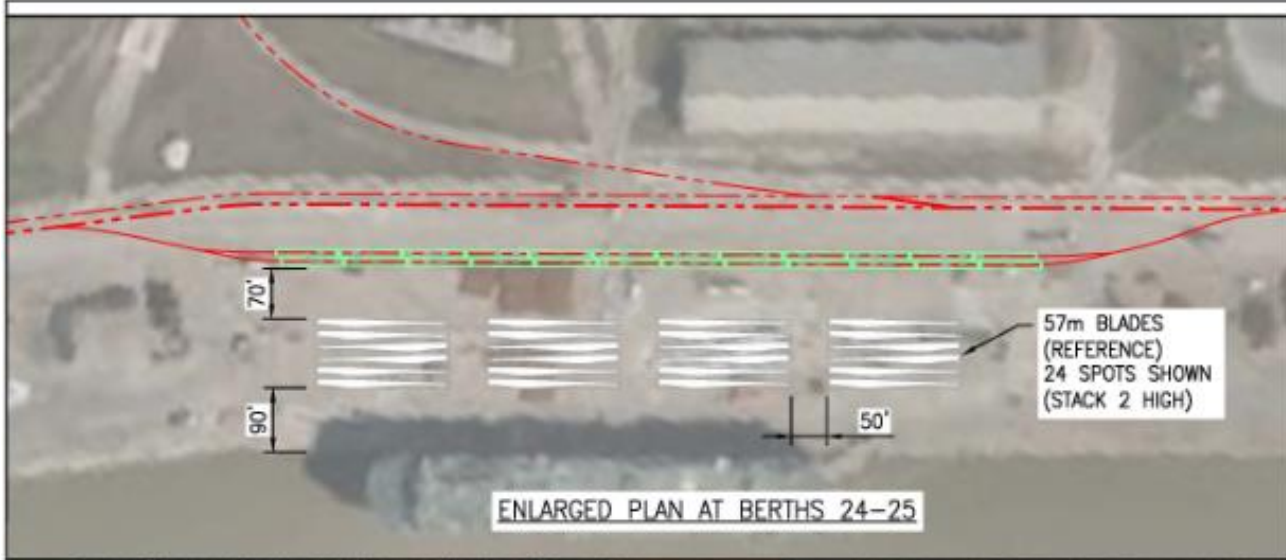
Cranes & Equipment

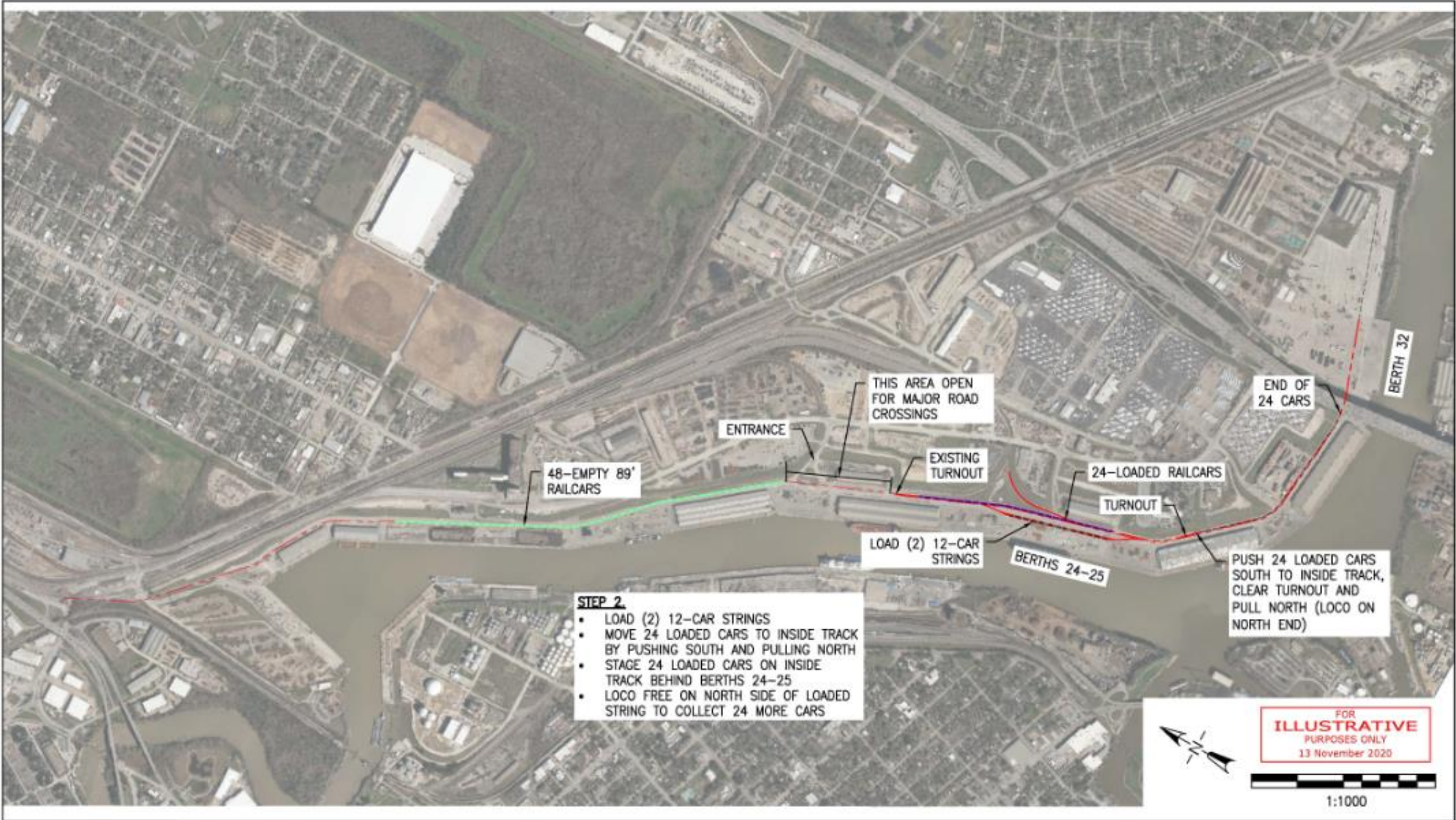
- Rail Mover – Shuttlewagon 435C
- Mafis with up to 120 ton capacity and compatible trucks
- Tower trailers for transporting up to 100 foot sections
- 7 x reach stackers
- Large fleet of forklifts 8,000 – 65,000 pound capacities
- Mobile cranes:
 - 4 x 300 ton
 - 2 x 250 ton
 - 2 x 200 ton
 - 1 x 160 ton
 - 3 x 140 ton



Appendix

- Storage Example
- Unit train operations plan – 57m blades





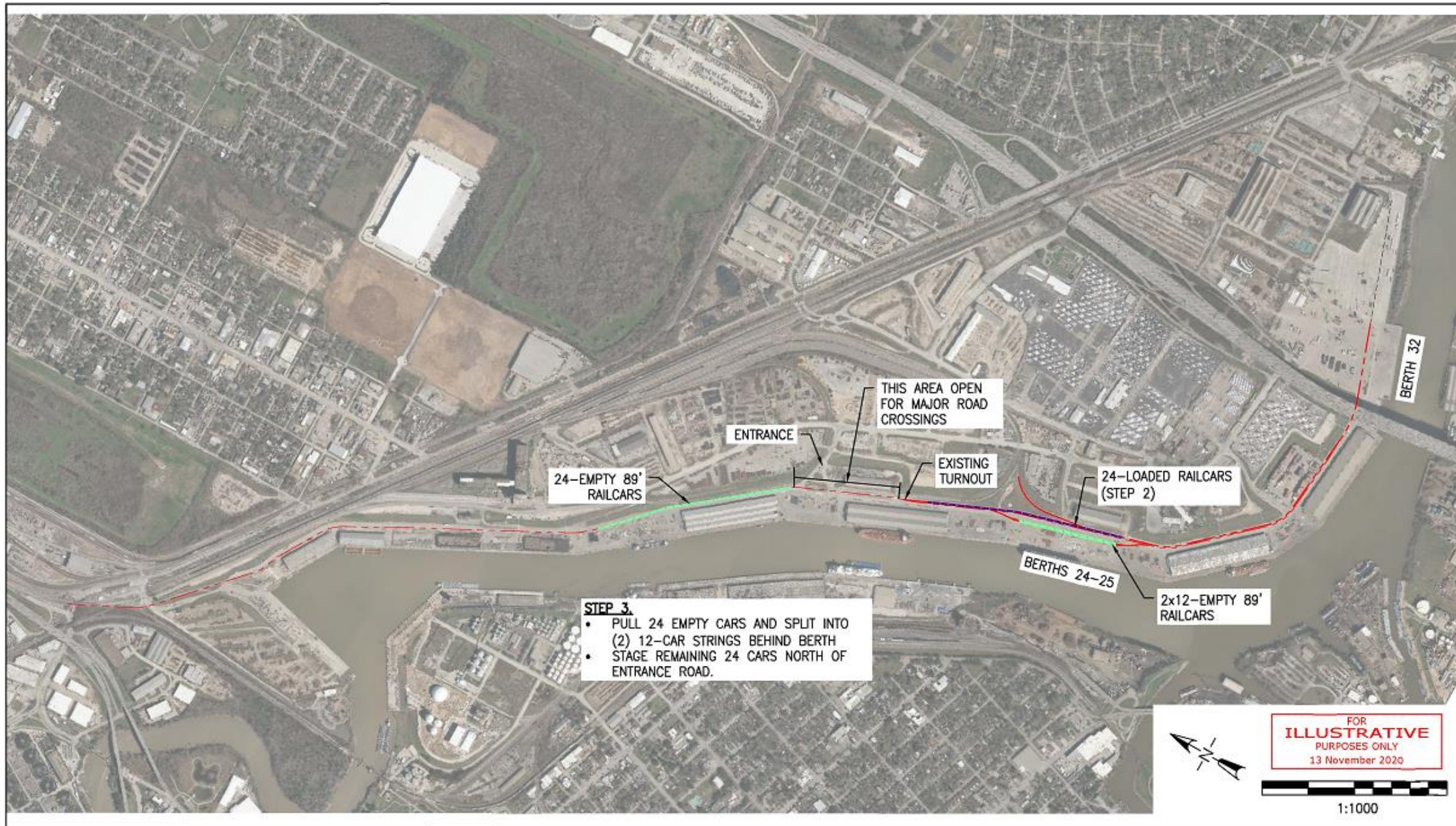
- STEP 2**
- LOAD (2) 12-CAR STRINGS
 - MOVE 24 LOADED CARS TO INSIDE TRACK BY PUSHING SOUTH AND PULLING NORTH
 - STAGE 24 LOADED CARS ON INSIDE TRACK BEHIND BERTHS 24-25
 - LOCO FREE ON NORTH SIDE OF LOADED STRING TO COLLECT 24 MORE CARS

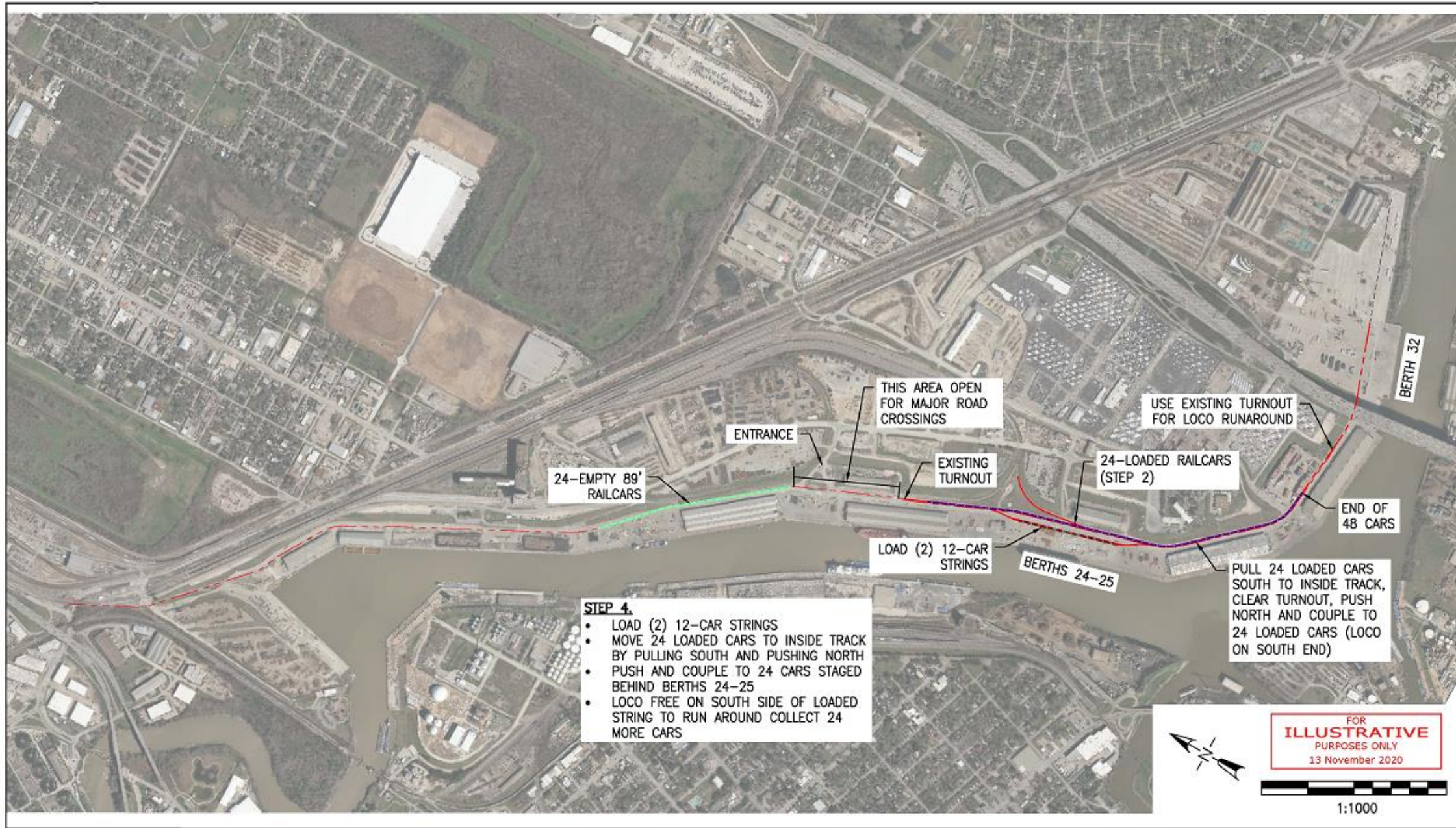
PUSH 24 LOADED CARS SOUTH TO INSIDE TRACK, CLEAR TURNOUT AND PULL NORTH (LOCO ON NORTH END)

FOR ILLUSTRATIVE PURPOSES ONLY
13 November 2020



1:1000





THIS AREA OPEN FOR MAJOR ROAD CROSSINGS

USE EXISTING TURNOUT FOR LOCO RUNAROUND

ENTRANCE

24-EMPTY 89' RAILCARS

EXISTING TURNOUT

24-LOADED RAILCARS (STEP 2)

BERTH 32

END OF 48 CARS

LOAD (2) 12-CAR STRINGS

BERTHS 24-25

PULL 24 LOADED CARS SOUTH TO INSIDE TRACK, CLEAR TURNOUT, PUSH NORTH AND COUPLE TO 24 LOADED CARS (LOCO ON SOUTH END)

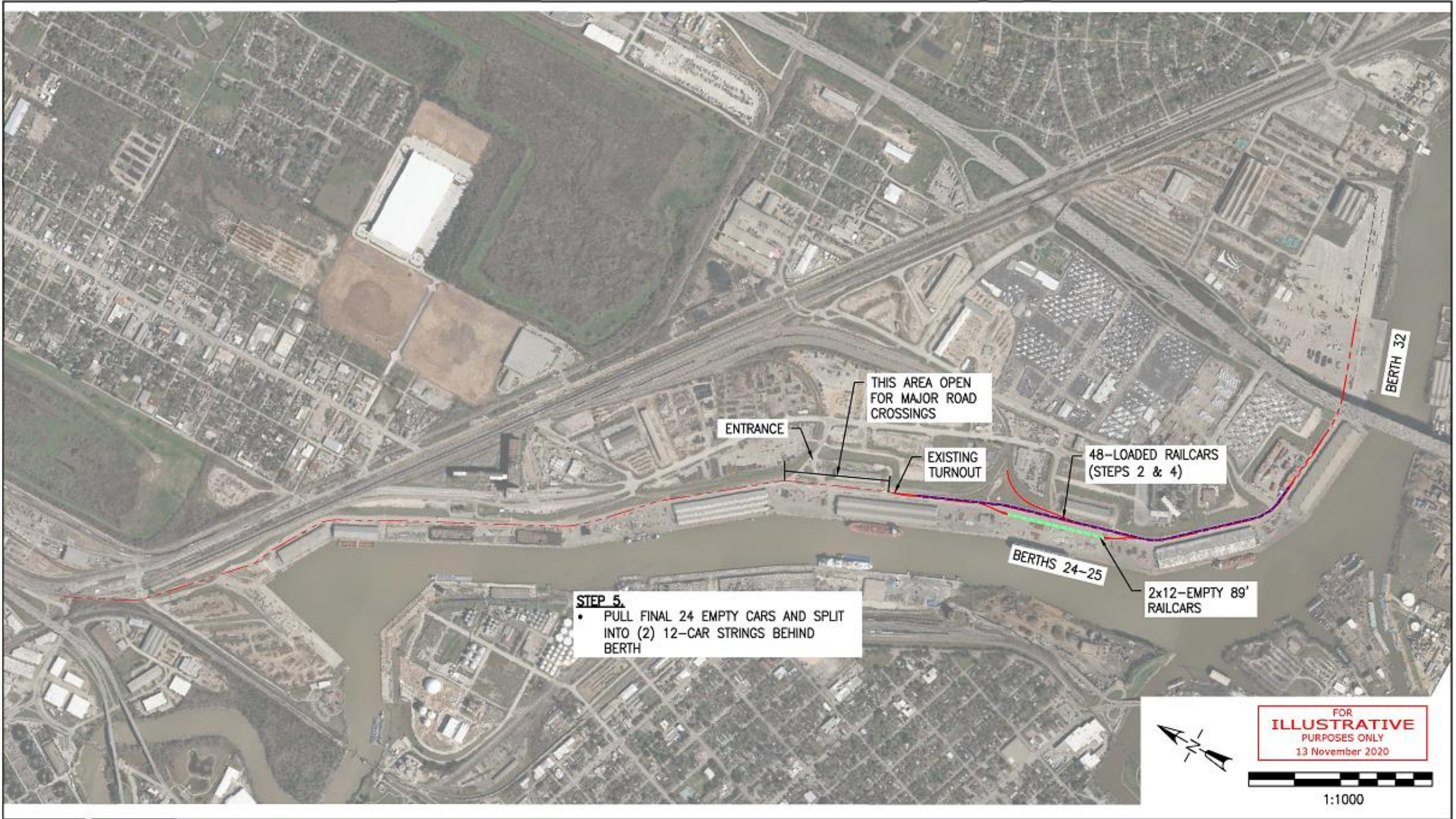
- STEP 4.**
- LOAD (2) 12-CAR STRINGS
 - MOVE 24 LOADED CARS TO INSIDE TRACK BY PULLING SOUTH AND PUSHING NORTH
 - PUSH AND COUPLE TO 24 CARS STAGED BEHIND BERTHS 24-25
 - LOCO FREE ON SOUTH SIDE OF LOADED STRING TO RUN AROUND COLLECT 24 MORE CARS

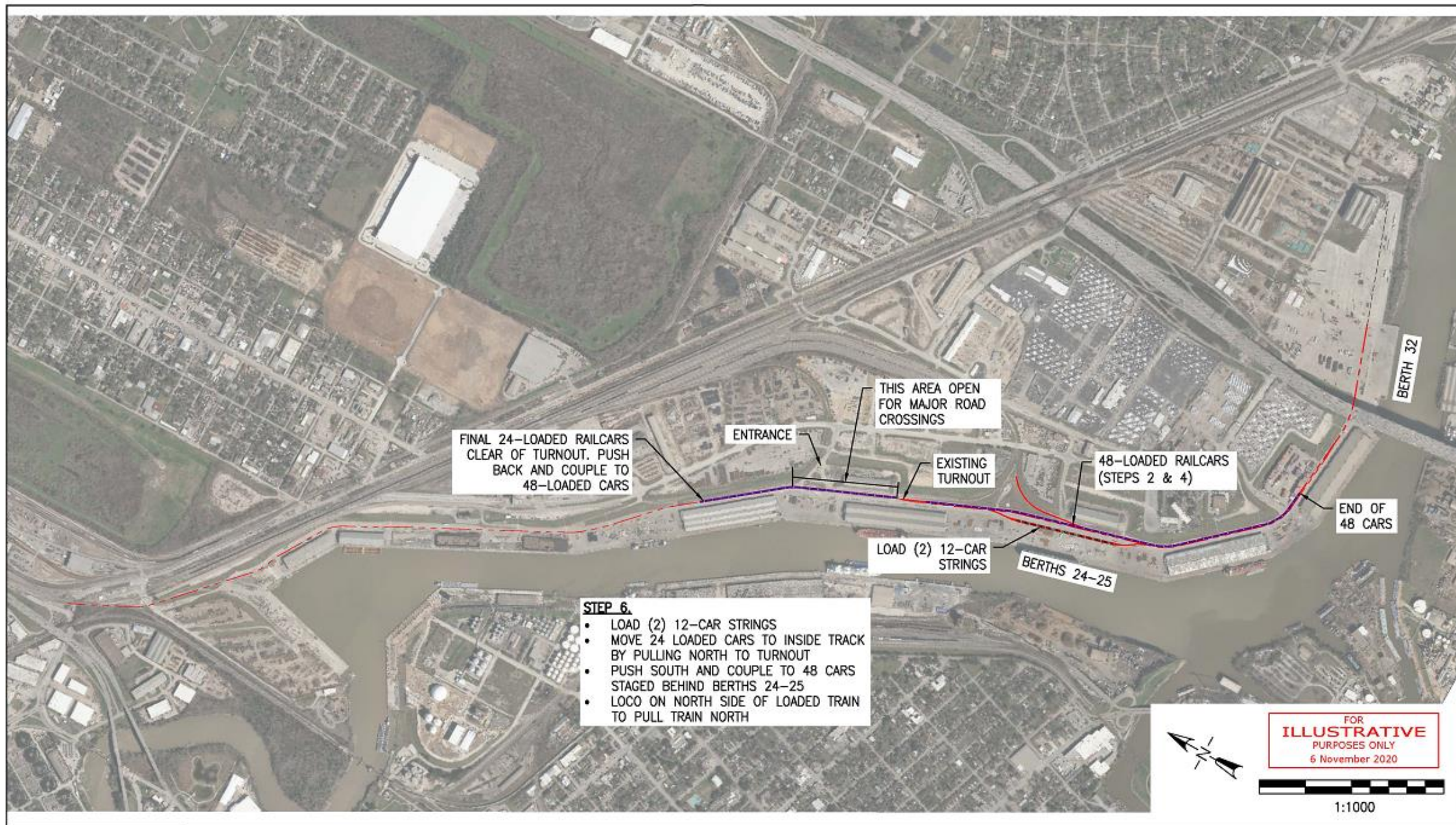


FOR ILLUSTRATIVE PURPOSES ONLY
13 November 2020



1:1000





FINAL 24-LOADED RAILCARS
CLEAR OF TURNOUT. PUSH
BACK AND COUPLE TO
48-LOADED CARS

ENTRANCE

THIS AREA OPEN
FOR MAJOR ROAD
CROSSINGS

EXISTING
TURNOUT

48-LOADED RAILCARS
(STEPS 2 & 4)

END OF
48 CARS

LOAD (2) 12-CAR
STRINGS

BERTHS 24-25

BERTH 32

STEP 6.

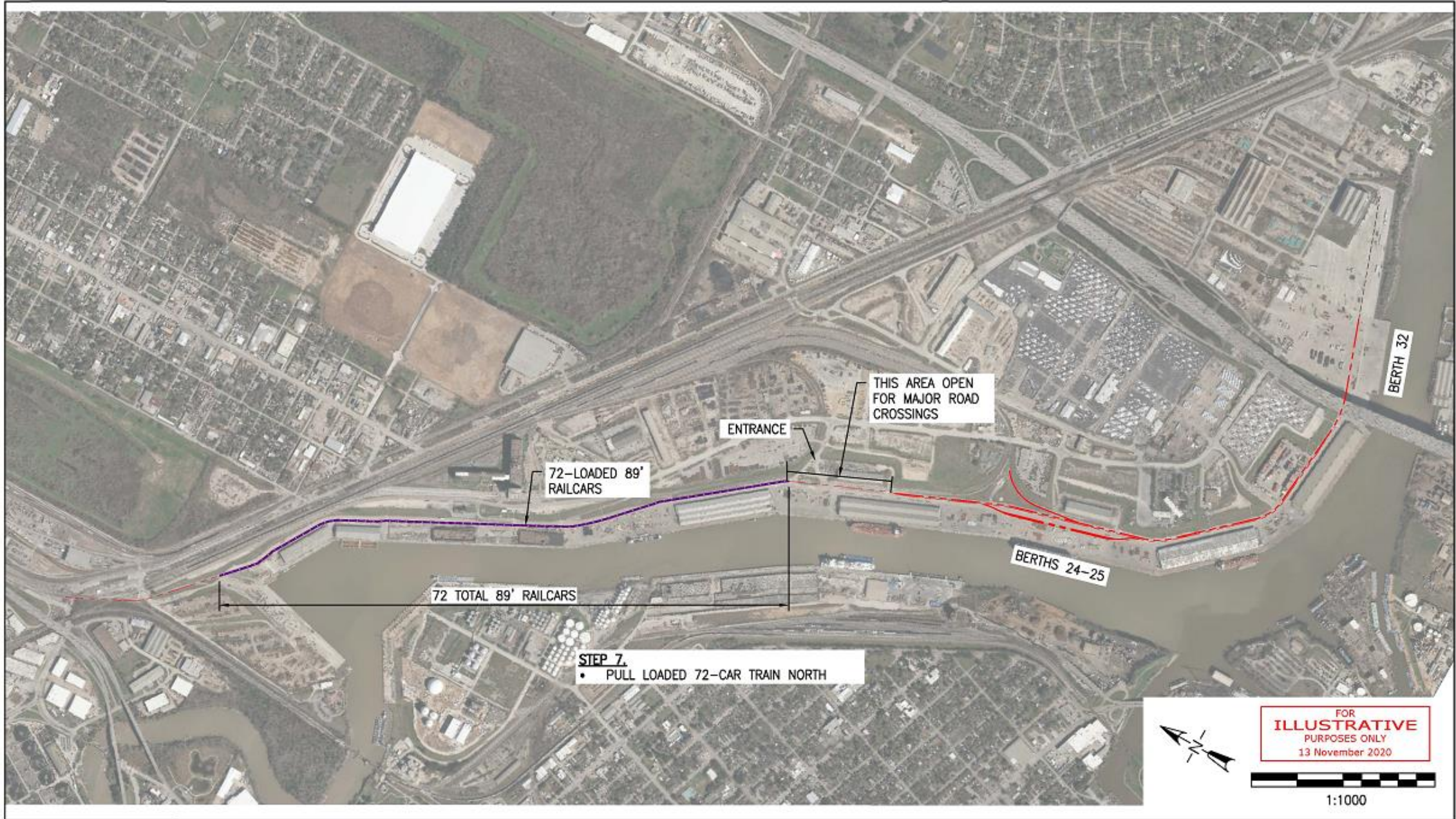
- LOAD (2) 12-CAR STRINGS
- MOVE 24 LOADED CARS TO INSIDE TRACK BY PULLING NORTH TO TURNOUT
- PUSH SOUTH AND COUPLE TO 48 CARS STAGED BEHIND BERTHS 24-25
- LOCO ON NORTH SIDE OF LOADED TRAIN TO PULL TRAIN NORTH



FOR
ILLUSTRATIVE
PURPOSES ONLY
6 November 2020



1:1000



FOR
ILLUSTRATIVE
PURPOSES ONLY
13 November 2020



1:1000